

TECHNICAL DATA

REGUPOL SONUS CORE 10-S

formerly REGUPOL 6010 SH

Product

A recycled crumb product specifically developed for heavy load bearing areas where acoustic performance is critical. A high performing screed isolation solution, **REGUPOL sonus core 10-S** delivers significant load bearing capacity.

REGUPOL sonus core 10-S meets the requirements of Approved Document E (England & Wales), Technical Booklet G (Northern Ireland) and Section 5 of the Building Regulations (Scotland).



Certification

- **Cradle to Cradle Certified®** is a registered trademark of the Cradle to Cradle Products Innovation Institute.
- Manufacturer EPD available upon request.
- Green Circle Certified.

Features and Benefits

- Excellent impact and airborne performance
- Offers long term performance without collapse or “bottoming” out under high point loads
- Resistant to ageing and deformation
- Quick and easy to install
- High quality and exact material thickness guaranteed
- Mildew and moisture proof
- Manufactured using recycled materials – the proportion of pre and post-consumer content is listed in the products Green Circle Certificate which is available upon request.
- Manufacturing facility certified to ISO 9001, ISO 45001, ISO 14001, ISO 50001

Applications

Designed for a wide range of high-performance isolation applications, **REGUPOL sonus core 10-S** is particularly suited to heavily loaded areas in:

- Luxury apartments
- Penthouses
- Hotels
- Schools
- Hospitals
- Libraries
- Retail
- Music studios

Physical information

| | |
|--------------------------------------|----------------------------------|
| Roll width | 1250mm |
| Roll length | 10m |
| Material thickness | 10mm |
| Weight per roll / per m ² | †73.5kg †5.88kg/m ² |
| Material composition | Recycled Rubber |

†Approximate Values

| Acoustical Performance* | Standard | Result | Comment |
|---|------------------------|--------------------|-----------------------------|
| REGUPOL sonus core 10-S 140mm solid concrete floor | BS EN ISO 10140-3:2021 | ΔL_w 27 dB | SRL Test Cert. No. 16557 |
| 46mm concrete topping REGUPOL sonus core 10-S 140mm solid concrete floor | BS EN ISO 10140-3:2021 | ΔL_w 28 dB | SRL Test Cert. No. 16558 |
| REGUPOL sonus core 10-S Heavyweight Standard Floor | BS EN ISO 140-8: 1998 | ΔL_w 27 dB | Test report 4978 |
| 40mm cement screed REGUPOL sonus core 10-S 260mm concrete slab | Insul method | $L_{n,r,w}$ 40 dB | Test report PC-14-0107-LLT1 |

*Assembly from top to bottom

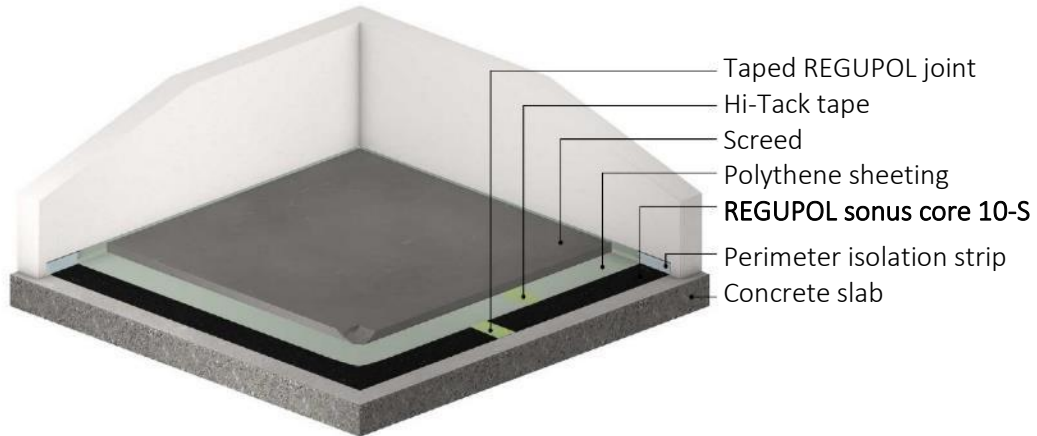
| Material properties | Standard | Result |
|------------------------------|-----------------|-------------------------------|
| Density | | approx. 575 kg/m ³ |
| Maximum surface load | | 150 kN/m ² |
| Mean dynamic stiffness value | DIN EN 29052-1 | $s'_t = 55 \text{ MN/m}^3$ |
| Elongation at break | DIN EN ISO 1798 | ≥ 40 % |
| Tensile strength | DIN EN ISO 1798 | ≥ 0.3 N/mm ² |

| Thermal behaviour | Standard | Result |
|------------------------|--------------|--|
| Thermal conductivity | DIN EN 12667 | approx. $\lambda = 0.09 \text{ W/(mK)}$ |
| Thermal resistance | DIN EN 12667 | approx. $R = 0.11 \text{ (m}^2\text{K)/W}$ |
| Temperature resistance | | -20 to +60° C |

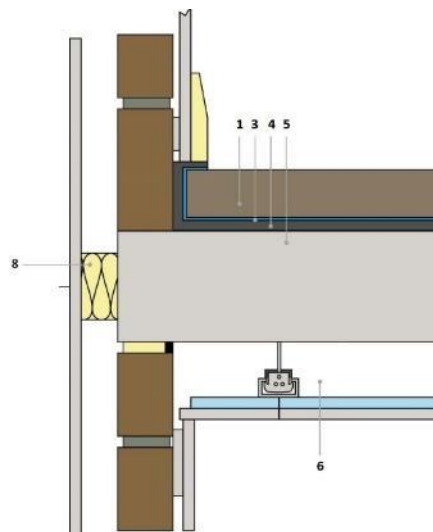
| Fire behaviour | Standard | Result |
|---------------------|----------------|--------|
| Fire classification | DIN EN 13501-1 | E |

Floor assembly

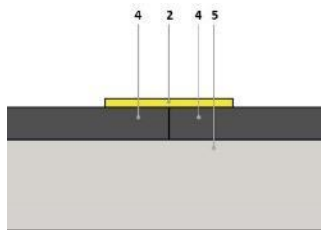
Cement screed



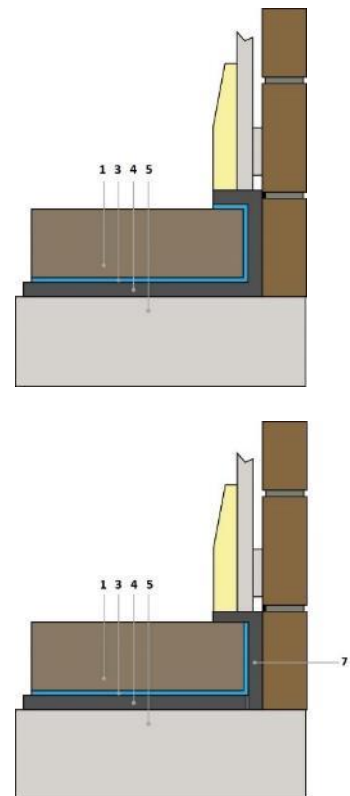
Construction Detail



Joint Detail



Perimeter Details



- 1 Screed
- 2 Hi-Tack tape
- 3 Polythene sheeting
- 4 **REGUPOL sonus core**

- 5 Concrete slab
- 6 Suspended ceiling system
- 7 Perimeter isolation strip
- 8 Acoustic cavity closer

NBS

- Regupol products are listed by CMS Danskin Acoustics on NBS Source.

General Storage and Handling

- keep the product dry and undercover.
- suitable handling equipment will be required for bulky products or pallets.
- DO NOT stack products or pallets as these will become unstable.

Installation

- Separate Installation guidelines by final floor finish are available to request.

Operation

- The product is intended to be static post installation. There is no operator involvement in its use.

Maintenance

- The products intended use and design, along with its often-inaccessible location post construction, means there are no maintenance requirements.

Health & Safety

- follow appropriate site material handling methods.
- when used with adhesives read and implement all Safety Data Sheet recommendations.
- as an article there is no requirement for a Safety Data Sheet.

Packaging & Product Disposal

- pallets can be readily re-used.
- pallet wrap / covers should be placed in an appropriate waste stream.
- the product remains in the construction until refurbishment or demolition as such the project lead should apply the contemporary national and local regulations for waste bearing in mind site and installation contaminants.

***IMPORTANT:** The information provided within this document is believed correct and to the best of our available knowledge at its revision date and is provided as suggestion for safe handling, storage, transportation, use and disposal. The information should not be considered obligation in respect of warranty of (technical) performance, quality (specification) or suitability for any application or design. The customer must satisfy themselves the product (or draft specification) are relevant and suitable for their need and design intent. Prospective users should test a sample of product under their own conditions to satisfy themselves of its suitability for intended purpose and that expert advice be sought where different applications are contemplated. Due to our policy of continuous improvement we reserve the right to alter or amend published specification or design without prior notice. Reproduction of any part of this publication in any manner is not permitted without our prior written consent.*