

## TECHNICAL DATA

### REGUPOL SONUSFIT T 110

Formerly known as FX-G Weightlayer

#### Product

**REGUPOL sonusfit t 110** range is designed primarily for the fitness flooring market with its intended use being for free-weight areas where a high-performance floor finish is required to provide reduction in impact and structure borne sound. **REGUPOL sonusfit t 110** tiles are supplied with dowel fixings to enable a simple and effective method of installation and can be installed as a single item or as part of a bespoke floor build-up. The underside of the REGUPOL sonusfit t 110 tiles have a dimpled surface to enhance the elasticity and acoustic performance of the floor and provide a comfortable surface on which to train. \*



#### Certifications

Cradle to Cradle Certified® is a registered trademark of the Cradle to Cradle Products Innovation Institute. **REGUPOL sonusfit t 110** (ultimate/classic) is Cradle to Cradle Certified® at the Bronze level.

#### Applications

- Gym flooring
- CrossFit
- Cardio
- Free-weights
- Lifting Platforms
- Machine Training
- Spin Studios
- Functional Training Areas
- Fitness studios
- Specialist Floors where impact and structure borne sound is prevalent

Physical information	REGUPOL sonusfit t 110, 45mm		REGUPOL sonusfit t 110, 70mm	
Top layer	REGUPOL everroll, 4mm		REGUPOL everroll, 4mm	
Tile dimensions (bottom layer)	1000mm x 500mm x 41mm		1000mm x 500mm x 66mm	
Weight per tile / per m <sup>2</sup>	14kg	28kg/m <sup>2</sup>	22kg	44kg/m <sup>2</sup>
Material composition	PUR-bonded rubber fibres		PUR-bonded rubber fibres	

Sports functional properties	Standard	Result
Force reduction	in accordance with DIN EN 14904	59% (45mm) 67% (70mm)
Sliding behavior <sup>1</sup>	DIN EN 13893	≥ 0.3μ
Slip Resistance <sup>1</sup>	DIN 51097 / DIN 51130	C / R 10

## TECHNICAL DATA

### REGUPOL SONUSFIT T 110

Formerly known as FX-G Weightlayer

Light reflectance <sup>1</sup>	DIN EN 13745	between 3.2 – 29.6 %, depending on colour
Abrasion <sup>1</sup>	in accordance with DIN ISO 4649	83mm <sup>3</sup>
Fire classification	EN 13501-1:2010-01 / EN9239-1:2010-11	See Colours & Decors

<sup>1</sup> Refers to **REGUPOL everroll**

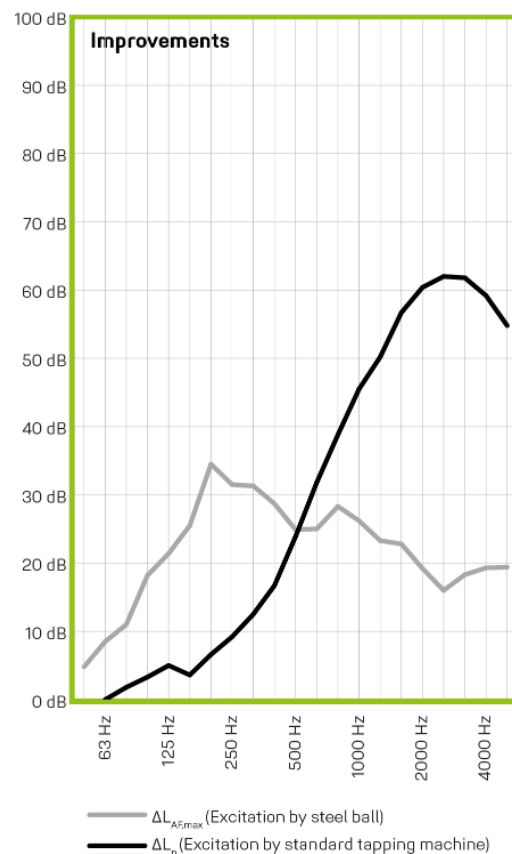
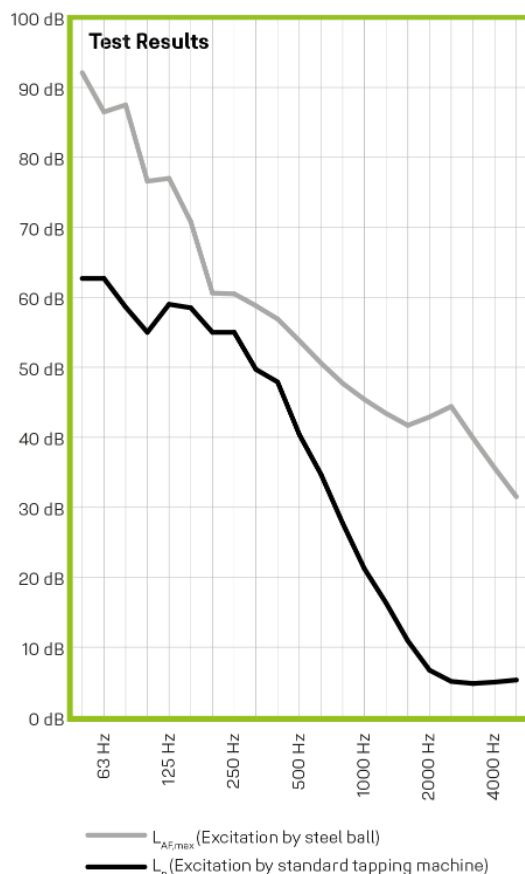
\*Subjective on-site field testing may be required to determine the performance of **REGUPOL sonusfit t 110** when used as a component part of a laminated build-up.

Where heavy point loads are applied to acoustic floors, subject to the full build up, it may be necessary to use spreader plates beneath the feet of equipment

Acoustical Performance*	Standard	Result	Comment
45mm <b>REGUPOL sonusfit t 110</b> , loosely laid on 140mm concrete slab	DIN EN ISO 10140-3 DIN EN ISO 717-2	$\Delta L_w$ 23dB	Tested by ITA Wiesbaden
45mm <b>REGUPOL sonusfit t 110</b> , loosely laid on 140mm concrete slab	Testing under realistic application conditions: 30kg, 400mm	$\Delta L_{AF,max}$ 22dB	Tested by ITA Wiesbaden

\* Test setup from top to bottom

### Illustrations for the reduction of the impact sound level and maximum sound pressure level



## TECHNICAL DATA

### REGUPOL SONUSFIT T 110

Formerly known as FX-G Weightlayer

Acoustical Performance*	Standard	Result	Comment
70mm REGUPOL sonusfit t 110, loosely laid on 140mm concrete slab	DIN EN ISO 10140-3 DIN EN ISO 717-2	$\Delta L_w$ 25dB	Tested by ITA Wiesbaden
70mm REGUPOL sonusfit t 110, loosely laid on 140mm concrete slab	Testing under realistic application conditions: 30kg, 400mm	$\Delta L_{AF,max}$ 30dB	Tested by ITA Wiesbaden

\* Test setup from top to bottom

#### Illustrations for the reduction of the impact sound level and maximum sound pressure level



## TECHNICAL DATA

# REGUPOL SONUSFIT T 110

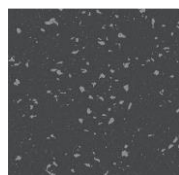
Formerly known as FX-G Weightlayer

### Colours and Decors

#### REGUPOL everroll ultimate

EDITION 4.0

REGUPOL everroll ultimate meets the currently valid EU requirements on a consumer product.



Orleans [1372]



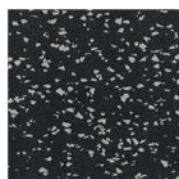
Ottawa [1369]

#### Fire classification REGUPOL everroll ultimate

C<sub>fl</sub> -s1 based on EN 13501-1:2010-01 / EN9239-1:2010-11

#### REGUPOL everroll classic\*

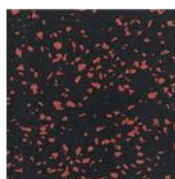
EDITION 4.0



Berlin [3030]



Mons [3256]



Goa [3033]

#### Fire classification REGUPOL everroll classic

E<sub>fl</sub> -s1 based on EN 13501-1:2010-01 / EN9239-1:2010-11

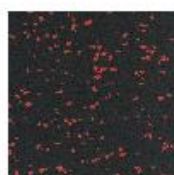
#### REGUPOL everroll essential



Glasgow



Berlin [3195]



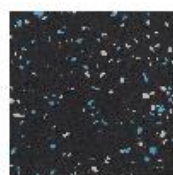
Goa [3033]



Amsterdam [3185]



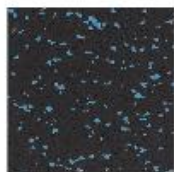
Bilbao [3159]



Helsinki [3196]



Kush [3150]



Palau [3195]



Mons [3256]

Deviations from the colours shown are possible due to variation in batches and print reproduction.

\*Wherever direct, prolonged or repeated skin contact can be expected, the requirements for a Consumer Product currently valid within the EU must be met. Where this is not expected, your choice can be made from the entire decor portfolio. Those products the manufacturer has identified as fulfilling the requirements of a Consumer Product, are explicitly marked as such. To aid your choice the manufacturers recommended everroll wear layer has been tabulated:

## TECHNICAL DATA

**REGUPOL SONUSFIT T 110**

Formerly known as FX-G Weightlayer

Application	Everroll wear layer
CrossFit, Functional Training	Ultimate
Cardio, Free-weights, Lifting Platforms, Machine Training, Spin Studios	Essential, Classic or Ultimate
Changing Rooms, Martial Arts Studios, Physiotherapy Rooms	Not Recommended

**IMPORTANT:** The information provided within this document is believed correct and to the best of our available knowledge at its revision date and is provided as suggestion for safe handling, storage, transportation, use and disposal. The information should not be considered obligation in respect of warranty of (technical) performance, quality (specification) or suitability for any application or design. The customer must satisfy themselves the product (or draft specification) are relevant and suitable for their need and design intent. Prospective users should test a sample of product under their own conditions to satisfy themselves of its suitability for intended purpose and that expert advice be sought where different applications are contemplated. Due to our policy of continuous improvement, we reserve the right to alter or amend published specification or design without prior notice. Reproduction of any part of this publication in any manner is not permitted without our prior written consent.